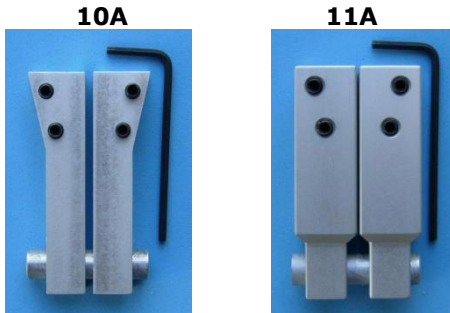


## FMS CALIPER ACCESSORIES

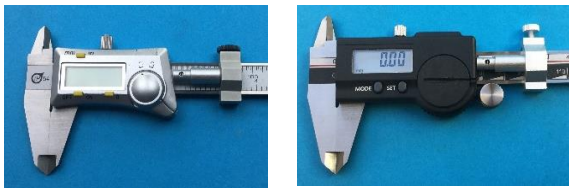
### INSERT HOLDERS

Insert holder 10A is for calipers with a jaw thickness up to 4mm / 0.157"  
 Insert holder 11A is for calipers with a jaw thickness up to 6.5mm / 0.256"



Insert holders can be made for any caliper jaw length and/or thickness. FMS measurement inserts fit all insert holders.

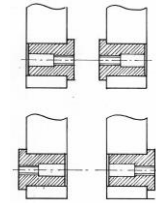
### CALIPER PRESSURE DEVICE



To determine if the force required to move the caliper sliding jaw exceeds 2N simply fasten the pressure device to the caliper, move the sliding jaw to touch the pressure device cylinder, zero the caliper and, by pulling the sliding jaw against the pressure device, see how far the sliding jaw is pushed back towards zero when released.  
 If the sliding jaw is pushed back to less than 1 mm, then the sliding jaw "friction" is less than the table value - which is good, as full cylinder movement (distance) can be used when measuring.

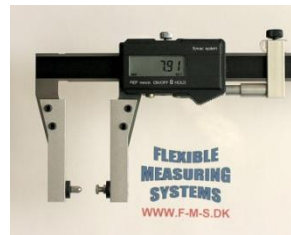
A FMS Pressure Device makes accurate, repeatable caliper measurement easy.  
 All discussion on too much or too little measurement pressure is eliminated.

### M2.5 FMS PROBE BUSHES



50A

When bushes 50A are mounted on insert holders a standard digital caliper can become a multi functional measuring tool for both external and internal measurement. Often only imagination will set a limit.



### CENTERSTOP 55A



Centerstop 55A is useful when measuring several threaded components (or long threads) after the centerstop has been adjusted so that the thread insert measures pitch diameter on the middle of the thread.

External pitch diameter measurement with holders 10A, pressure device 40A, centerstop 55A and external thread pitch diameter measurement inserts.

